

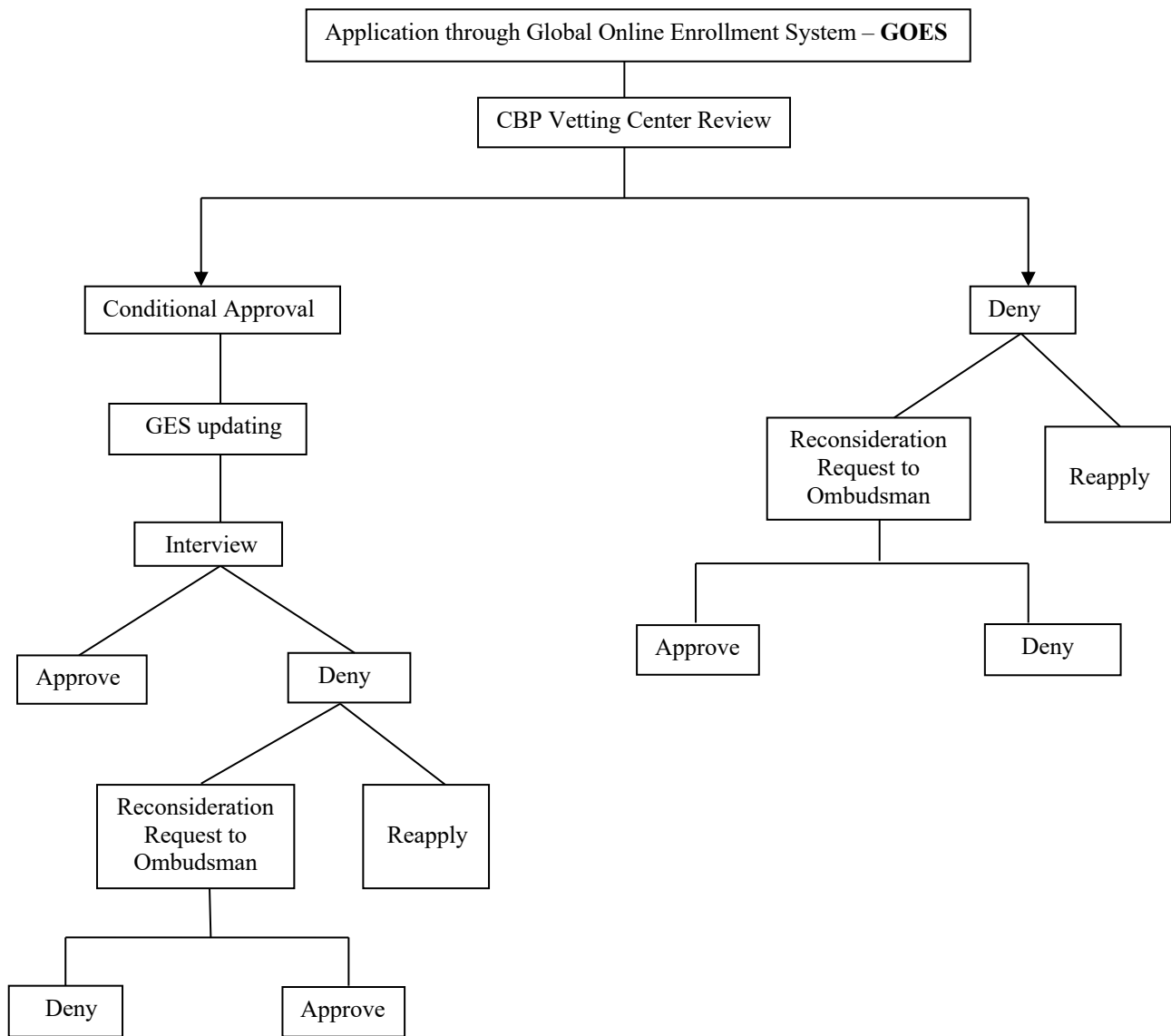
**A GUIDE TO RECONSIDERATION REQUEST TO THE OMBUDSMAN**

**GLOBAL ENTRY  
RECONSIDERATION  
REQUEST**

The contents of this document are intended to convey general information only and not to provide legal advice or opinions. This document is limited to administrative proceedings and does not extend to litigation in court. The contents of this document should not be construed as, and should not be relied upon for, legal advice in any particular circumstance or fact situation. The information presented in this document may not reflect the most current legal developments. Readers agree to waive any right of action of any kind in reliance on the information contained in this document and we disclaim all liability in respect of actions taken or not taken based on any or all of the contents of this document to the fullest extent permitted by law. An attorney should be contacted for advice on specific legal issues.

**GLOBAL ENTRY PROGRAM – APPLICATION PROCESS AND  
RECONSIDERATION REQUEST TO OMBUDSMAN**

Global Entry Program is one of the four trusted traveler programs operated by U.S. Customs and Border Protection (“CBP”) to allow pre-enrolled and low-risk participants to receive expedited border processing. Below is a flowchart that depicts the application process of Global Entry Program and the process of denial reconsideration request to Ombudsman.



\*GES = Global Enrollment System

## **TABLE OF CONTENTS**

1. ELIGIBILITY TO GLOBAL ENTRY PROGRAM
2. DENIALS
3. REVOCATION OF MEMBERSHIP
4. WHY WERE YOUR PRIVILEGES DENIED OR REVOKED?
5. POSSIBLE REASONS FOR DENIAL
6. POSSIBLE REASONS FOR REVOCATION OF MEMBERSHIP
7. RECONSIDERATION PROCESS
8. STEPS FOR RECONSIDERATION OF DENIAL OR REVOCATION OF GLOBAL ENTRY PRIVILEGES
9. POSSIBLE ARGUMENTS FOR RECONSIDERATION REQUEST TO OMBUDSMAN
10. ROLE OF COURTS IN DETERMINING GLOBAL ENTRY ELIGIBILITY
11. OTHER OPTIONS FOR EASE OF TRAVEL

## **ANNEXED TO THIS GUIDE**

EXHIBIT A - Example for a Global Entry Freedom of Information Act Request

EXHIBIT B – Example of a Global Entry Reconsideration Request